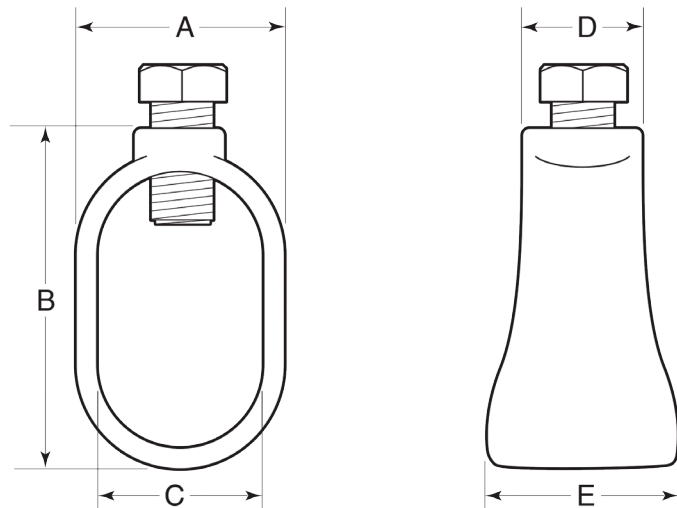
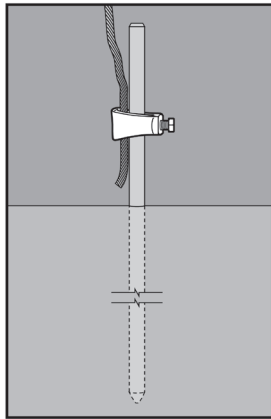


STAINLESS STEEL GROUNDING ROD CLAMPS



APPLICATION

- Provide a means of connecting ground wire to a ground rod/electrode connector
- Set screw provided with ground rod clamp helps tighten connection for better conduction
- Manufactured in stainless steel to help prevent corrosion
- Can be installed using ordinary hand tools and require little maintenance or repair
- Provided in a bright, polished finish that does not require touch up or painting



PRODUCT DETAILS

Material:

- Body: CF8M (316 SS)
- Bolt: 316 SS

Standards:

ASTM A351, ASTM F593

Country of Origin:

Body 100% Made in USA; bolt may or may not be of U.S. origin

UL File Number:

KDER.E340519

Canada UL File Number:

KDER7.340519

Part Number	Rod Size	Weight/100 (lbs.)	Dimension (in.)				
			A	B	C	D	E
GRC625	5/8 in.	13	0.96	1.38	0.66	0.63	0.69
GRC75	3/4 in.	14	1.10	1.50	0.77	0.62	0.88
GRC100	1 in.	45	1.45	2.38	1.05	0.94	1.63



© 2015 GIBSON STAINLESS & SPECIALTY, INC. - REV 12/2015

PO BOX 847, GREENSBURG, PA 15601
PHONE: 1-800-945-4316 • FAX: 724-838-1544

WEB: GIBSONSTAINLESS.COM